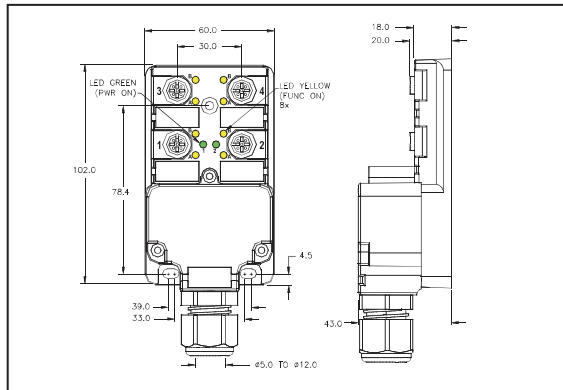


M12 Solenoid valve special junction box

4-port, With shrapnel tightening terminal

4M12-3PF-P/F



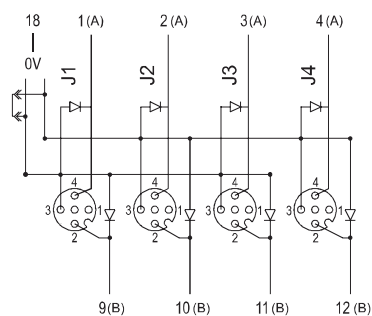
- M12, 4-channel double signal
- Protection class IP65
- External solenoid valve signal
- With shrapnel tightening terminal.
- With on-site diagnosis function

Technical parameter

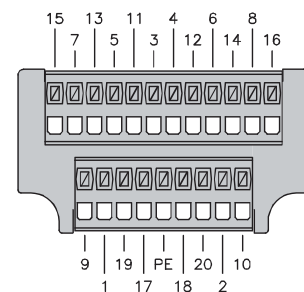
Electrical parameter

Rated voltage	10...30VDC
Rated current	10A
Current	2 A per signal contact
The LED working current	10mA per channel
Ambient temperature range	-30...80°C
Screw-in thread	PG13.5
I/O port	M12 x 1
Number of Pins	4
Display operating voltage	LED, green
Display switching state	LED, yellow
Housing material	Black Nylon
Contacts	Brass, Gold-plated
Seal	Viton (FPM)
Protection class	IP65, (screwed together)

Wiring diagram



Shrapnel Tightening Terminal



4-port,double signal

PIN	J1-2	J1-3	J1-4
Terminal	9	18	1
PIN	J2-2	J2-3	J2-4
Terminal	10	18	2
PIN	J3-2	J2-3	J2-4
Terminal	11	18	3
PIN	J4-2	J4-3	J4-4
Terminal	12	18	4